



Growing Great Places Together
Cultivons ensemble de beaux espaces

Community Profile

Town of Baldur
Manitoba

2024

Table of Contents

| | | |
|-----|--------------------------------------|---------|
| 1. | 2024 Participant Information | Page 3 |
| 2. | Introduction to Baldur | Page 4 |
| 3. | Communities in Bloom Committee | Page 5 |
| 4. | Message from the Reeve | Page 6 |
| 5. | Municipal Information | Page 7 |
| 6. | Judges' Suggestions from prior years | Page 8 |
| 7. | Community Appearance | Page 9 |
| 8. | Environmental Action | Page 10 |
| 9. | Heritage Conservation | Page 13 |
| 10. | Tree Management | Page 19 |
| 11. | Landscape | Page 20 |
| 12. | Plant and Floral Displays | Page 22 |
| 13. | Map | Page 24 |
| 14. | Itinerary | Page 25 |
| 15. | Contacts | Page 26 |

2024 PARTICIPANT INFORMATION

Population: 297

Website: www.rmofargyle.ca

CiB Committee Chair Contact: Tammy McIntosh

Area in Square Miles: .38 square miles/242 acres

Acres of Active Recreation: Approximately 17

Acres of Passive Recreation: Approximately 3.5

Do You Have a Volunteer Coordinator? No

Category: Population up to 500 - Provincial Evaluated 16 times, Non-evaluated:2018 & 2023

CiB Participation History:

| <i>Year</i> | <i>Bloom Rating</i> | <i>Special Mention</i> | <i>Outstanding Achievement or Other Award</i> |
|---|---------------------------------|--|---|
| 2002 Dauphin | 4 Blooms | Tidiness Effort | |
| 2004 Minnedosa | 4 Blooms | Community Involvement | |
| 2005 Boissevain | 4 Blooms | Floral Displays | |
| 2006 Winkler | 4 Blooms | Community Involvement | |
| 2007 Brokenhead/Beausejour | 4 Blooms | Community Involvement | |
| 2008 Neepawa | 5 Blooms | Youth Program for Community Involvement | |
| 2009 Brandon | 5 Blooms | Veteran Park | |
| 2010 Killarney | 5 Blooms | West & East BALDUR Entrance Signs | |
| 2011 Arborg | 5 Blooms | Veteran Park | |
| 2012 Virden | 5 Blooms | Veteran Park | |
| 2013 Selkirk | 5 Blooms | Back Lanes | Gardens of Remembrance -2000 Tulips given to Baldur |
| 2014 Dauphin | 5 Blooms | Recreational Facilities including the Ballpark | Gardens of Remembrance - \$500 |
| 2015 Killarney | 5 Blooms | Municipal Support | |
| 2016 Stonewall | 5 Blooms | Veteran Park | |
| 2017 Peace Gardens | 5 Blooms - Silver | Residential Yards | |
| 2018 Morris - Attended Conference | Non-evaluated due to hail storm | | |
| 2019 Morden | 5 Blooms - Silver | Digitized Historical Information | Equinox Floral Display Award -\$500. |
| 2020 Conference canceled due to Covid-19 Regulations | | | |
| 2021 Participated in partial Program "Hope is Growing" Covid-19 Regulations still in effect | | | |
| 2022 Covid-19 Regulations still in effect | | | |
| 2023 one day Conference Portage la Prairie - Non-evaluated- 3 committee members attended conference | | | |
| | | | |

Introduction to Baldur

Welcome to Baldur, Manitoba – an unincorporated community recognized as a Local Urban District nestled in the heart of the R.M. of Argyle. Founded in 1890 with the coming of the railroad the town is named after the Norse God of innocence and summer sun “Baldur,” reflecting the Icelandic heritage of the community.

By 1898 the population was around four hundred, and townspeople could choose from four general stores, a hardware store, three fruit and confectionery stores and a host of other businesses. Baldur had become the commercial center of the agricultural region that surrounded it, and in doing so became quite separate from that, a community.

A walk down Elizabeth Avenue today takes you past the Fowler House built in 1897 and Fowler Block constructed in 1899, home to Baldur Trading and Baldur - Glenboro Gazette, and the T. Pool's Hardware, built in 1910, which now houses the Argyle Museum and Baldur Fitness Center. The Train Station grounds have been lovingly re-cast as Veterans Park with picnic shelter and public washrooms.

Baldur remains active, although not as busy as it was as on any given Saturday night in the 1970's when all stores on a two-block span of Elizabeth Avenue and down Second Street were open late, with both tables busy at the pool hall, a movie playing at the Memorial Hall and every table and every parking spot at the Baldur Motor Hotel was full.

Today, 134 years since its founding, Baldur remains a vibrant hub as the largest community and main commerce center in Argyle. A thriving population of approximately three hundred keeps alive the pioneering spirit that founded our home. Volunteer committees are actively engaged in maintaining our heritage while looking to the future to ensure our home is around for generations to come.

Baldur offers a warm and welcoming experience for all who visit.



Community in Bloom Committee

This year marks the beginning of a brand new CiB committee. With a number of our Flower Committee members recently retiring we decided to reach out to the community to assemble a group that is excited to continue with this program. The goal was to build a group that would help bring together representation from the many local committees Baldur has including the municipality.

The 2024 CiB Committee members include:

Tammy McIntosh - Baldur Flower Committee President
Hedy Joycey - Baldur Flower Committee Past President
Laurie Glenn-Martindale - Principal, Baldur School
Brenda Gudnason - Argyle Heritage Museum
Gayle Johnson - Baldur-Glenboro Gazette
Randy Desrochers - Baldur Community Development Association
Belinda Pearson - L.U.D. of Baldur Representative
Darcy Dearsley - L.U.D. of Baldur/Water Plant Operator

The first order of business for us is to educate the public that CiB is “more than flowers”. This year we are encouraging water conservation, education (via gazette articles) and promoted a town wide clean up week from June 9th – June 15th in conjunction with the Baldur Solstice Days and Graduation. A number of residents shared their before/after pictures. It was fun for all and showed that simple clean-ups make a big impact.

Community Involvement

As much of the important unofficial work of our community is done by committees of volunteers, we requested a brief write-up from each of the committees explaining what they do that exemplifies some of the goals of the Provincial CiB Program. We were pleasantly surprised by the many responses and have inserted them within this document to demonstrate aspects of community involvement within the six criteria.



Sunrise Credit Union Staff volunteer in the spring to help plant all the annuals that provide so much colour in our town

Message from the Reeve

On behalf of the RM of Argyle it's my pleasure to welcome communities in bloom back to the beautiful town of Baldur. In the past few years this little town has been a beehive of activity. From the new highway through town, the upgrades to the campground, the addition of a walking path and of course the new daycare facility that's currently under construction it is not hard to see that this community is thriving and striving to grow.

These accomplishments are only possible by everyone pitching in and so with that I'd like to thank all the volunteers that put in countless hours keeping the trees watered, the flower beds weeded, and the rec facilities functioning all year long! I'd also like to thank the LUD members for their continuing support of the beautification efforts of the flower committee!

So I encourage anyone visiting our great little place to take in the sights, chat with folks, check out what our merchants have to offer and come back often!!

Enjoy your time!

Mike Everett
Reeve
RM of Argyle



Municipal Officials & Staff

| | |
|---|--|
| Mike Everett, Reeve | Alan Skardal, Deputy Reeve |
| Joedy Desrochers, Councillor | Jesse Janz, Councillor |
| Kory Van Damme, Councillor | Lana Grenier, Councillor |
| Ross Ballantine, Councillor | |
| | |
| Troy Sigvaldason, L.U.D of Baldur Chair | Belinda Pearson, L.U.D of Balur |
| | |
| Ayeh Arta, Chief Administrative Officer | Lori Johnson, Assistant Administrative Officer |
| Tammy McIntosh, Financial Assistant | Colleen Vanwynsberghe, Recreation Director |
| | |
| Don Gudnason, Public Works Foreman | Darcy Dearsley, L.U.D./Water Plant Operator |

Municipal Information

Municipal Services

- Fire Department
- Recreation Centre - Curling Rink/Hockey Rink
- Baseball Diamonds - Baldur Regals/Minor Ball
- Belgian Bowling Lanes
- Campground/Playground
- Drop In Centre
- Recreation Department - Adult/Children Programs
- Handi-Van
- Age-Friendly Community Recognition
- Crime Watch Program
- Water Plant
- Central Assiniboine Watershed District
- Argyle Public Library (located in the School)
- Pelican-Rock Lake Planning District
- Weekly Garbage and Recycling pick-up
- Highway speed signs

Recent Upgrades

- Fiber Internet
- CCTV Camera Inspections of sewer system
- Sidewalk upgrades
- Paving upgrades
- Culvert upgrades
- Campground upgrade
- Office Computers
- Fire Department Water Truck Purchase
- South Avenue water & sewer line extension
- Municipal Shop construction (storm replacement)

Upcoming Upgrades

- Genset for Lift Station #2
- Daycare
- Sidewalk upgrades
- New Service Truck
- New Handi-van
- Waste Disposal Ground Expansion Permit Process

This years municipal budget includes extensive projects. Normal budget is usually 2.5 - 3.5 million

2024 TAX DETAILS

| | 2023 Mill Rates | 2024 Mill Rates |
|--------------------------------------|-----------------------|--------------------------------------|
| <u>SCHOOL DIVISION</u> | | |
| Education Support Levy | 8.140 | 8.128 |
| Prairie Spirit School Division | 8.039 | 8.481 |
| Turtle Mountain School Division | 10.670 | 11.160 |
| <u>MUNICIPAL</u> | | |
| At Large | 5.330 | 5.628 |
| Rural Area | 8.115 | 8.388 |
| LUD of Baldur | 15.555 | 15.893 |
| Water Plant Upgrade Levy | 0.495 | 0.474 |
| 2024 MUNICIPAL BUDGET | \$8,639,152.27 | 2024 EDUCATION BUDGET |
| | | \$1,378,198.00 |

2023 PARTICIPANT INFORMATION

In 2023 we took part in the non-evaluated portion of the CiB program. A few committee members attended the presentation in Portage and shared what they learned at our fall meeting. We appreciated having this participation option available. Our last participation year was in 2019.

Judges' Suggestions from Prior Year

| Suggestion from 2019 Evaluation Document | Implemented | Not Implemented | Notes |
|--|-------------|--------------------|--|
| Hold annual Garden Tours to promote learning | | ✓ | Intended to do so. Derailed by Covid-19 and have not implemented |
| Build raised beds at Lodge | | ✓ | |
| Plan Activities that pair elders with youth | ✓ | | High school students help the elders in the Flower Committee by cleaning up & preparing planters and beds each spring. School plans activities to cheer up seniors and people living alone; and interactions with PCH residents. |
| Experiment with native perennials | ✓ | | 70 plugs of native perennials planted in 2023. 62 Survived their first winter. |
| Increase perennial diversity | ✓ | | 2021 received many different perennial varieties from an amazing gardener and planted them in the Veteran Park. |
| Try a butterfly pollinator garden. | ✓ | | The school has planted a Butterfly Garden |
| Encourage youth participation in town clean-up | ✓ | | Every Earth Day the school (students & staff) do a complete cleanup of Baldur streets/sidewalks/boulevards. |
| Foster communications/partnerships with business/organizations | ✓ | | Sunrise Credit Union volunteers to help the Flower Committee plant annuals annually. The new CiB Committee is made up of individuals from different institutions and organizations. |
| More education about blue bin recycling | | ✓ | Determined not necessary. Have great participation. |
| More info about Norse Heritage and Solstice Weekend in Profile Book | | ✓ | |
| Preserve Indigenous relics in Museum | | ✓ | |
| Veteran Park historical Sign unreadable | | ✓ | |
| Provide more info about former railway | | ✓ | |
| Create comprehensive plan to prune, maintain, diversify Baldur's Urban Forest | | Plan to be created | At 1st NEW CiB meeting May 2024 it was decided to tackle this planning over the winter 24/25. |
| Use Hydro Manitoba Grant to purchase trees | ✓ | | LUD accessed Pembina Co-op and Central Assiniboine Watershed Grants for trees & supplies in 2023 |
| Veteran Park benches & tables need maintenance | ✓ | | New picnic tables were donated, old table removed and benches stained by a volunteer. |
| Control grass & weeds between paving stones with Polymeric sand | ✓ | | Tried this in 2020 and the results were not successful. |
| Mulch garden beds & young trees | ✓ | | Have significantly increased mulching practices. Still more to do. Main bed at Veteran Park to be mulched. |
| Signage on Flower Beds to identify volunteer work groups/businesses | | ✓ | |
| Diversify design styles in annual planters. Use herbs, create fall & winter arrangements | | ✓ | |

Community Appearance

Arriving from the east or west into Baldur you will be driving on our newly reconstructed highway 23. The highway project was completed in the fall of 2023 and is a major improvement for residents and visitors to the area. Baldur greets you with its signature signs on each end of the L.U.D limits. The west sign boasts a combination of perennial and annual flowers. The east sign is our new “xeriscape” project.

The L.U.D. took advantage of having the paving crew in town in 2023 and completed paving to address water issues at the Baldur Recreation Center and re-paved the parking lanes from First Street to Forth Street. In 2024 the back lane access to the personal care home, South Avenue, the southern portion of Oak Creek Road and the new walking path on Oak Creek Road was also paved. The walking path creates a safe place for residents to walk on our very busy southern access road.

Visitors will find our streets paved, sidewalks maintained, parks and campground treed and well mowed. In conjunction with recycle manitoba new recycle/garbage can combinations were placed around town. Fortunately we have had very little graffiti or vandalism problems. Our residents are very good at keeping yards and boulevards maintained.

We hosted a “Community Clean up Week” in June and Baldur looked wonderful for the graduation parade and Solstice Weekend. Veteran Park is now home to the Baldur Early Learning Center, a joint project between the province, municipality and local day care board. The children will have a wonderful park as their backyard.

The benches at veteran park have received a fresh coat of stain and the flower beds are being revamped. The public washrooms are meticulously maintained by a local volunteer. A memorial bench was placed this year as well as the little library lending box, courtesy of the Prairie Spirit Teachers Association. It is our hope parents, children and anyone who loves to read might choose a book to read while they enjoy the view of the main street and flower beds.

Successful fundraising efforts in the past and contributions by the municipality have enabled the flower committee to place self watering planters around to display our flowers. A bench was recently placed at the third street corner to enable students and residents of the lodge to sit for a minute or more and enjoy the view of the flowers and food forest across the street. On Friday afternoons you will find the farmers market under the shelter to purchase fresh vegetable baking and craft items.

Driving up to the Rural Municipality of Argyle office you will notice a significant change, the office was completely renovated in 2022, this included an addition on the north side with four new offices, new siding, shingles and stone front. The office is now completely wheelchair accessible, bright and welcoming.



Environmental Action

Municipal

Sustainable Development Strategies - The municipality has implemented a Receipt Policy to adopt a green initiative and reduce paper consumption and postage costs for yearly tax receipts. The RM encourages ratepayers to provide an email address to receive tax payment receipts electronically. This has significantly reduced paper/envelope usage as well as reducing postage costs.

All payroll and a number of accounts payable invoices are now paid via direct deposit, again reducing the amount of paper and postage we once used.

Council approved a Social Environmental Sustainability Policy to commit to, identify and address governance, economic, social, environmental and cultural sustainability goals that impact the ratepayers and citizens we serve in the municipality.

Waste Reduction - The waste disposal ground provides a means for residents to dispose of and recycle a number of items. In conjunction with MMSM we offer a mixed recycling program and receive funds back to help cover the cost of disposal. Compact fluorescent lights and paint are collected and returned to Product Care Recycling for proper disposal. Working alongside MARRC, the waste disposal grounds operate a used oil and filter recovery program.

Water Conservation - The RM of Argyle has jumped on board regarding water conservation by purchasing two rain barrels, one for the municipal office and one located near the public washrooms in Veteran's Park. These will be used to water the flowers and plants in those locations. The Central Assiniboine Watershed District has also allowed us to use one of their 1,350 gallon water tanks and the municipality has approved it being located at the firehall. The captured water here will be pumped into the flower committee portable water tank and be used for the food forest and flowers.

The local fire department fills their water trucks from the north and south municipal wells to reduce the use of treated water and the strain this causes on the water plant.

Energy Conservation - Baldur Recreation Center is using a geothermal heating option, they recently upgraded the rink lights to LED and relined the curling rink roof. Baldur Hall has converted to LED lights inside as well.

Many of the hydro lights in Baldur have been transitioned to LED lights.

A new genset generator is on order for the east lift station. This addition will help keep the lift station running during power outages to avoid the risk of any sewer backups.

A joint project between the municipality and Clean Water Pro is testing a new product to help reduce the amount of sludge in the lagoon. The results are positive to date, the municipality hopes this will extend the life of our lagoon.

Business & Institutions

Participation in The Environmental Effort - All businesses in Baldur receive weekly recycling and garbage pickup. Baldur School incorporates many environmentally friendly activities into their school year. Please read their update at the end of this section.

Environmental Initiatives and Action -The LUD offers yard waste pickup in the spring and fall. That has expanded this year due to the excessive winds we have been experiencing and the summer students have been helping residents clean up the debris on a weekly basis. Community clean up week was held in June.

Residential Participation in Environmental Initiatives - All residents receive weekly garbage and recycling pickup. Recycling bins are located in key locations to promote proper disposal of items and this option is used by many residents. Recycle volume has increased by 22.9 tonnes since 2013, the 5 year average is 32.8 tonnes of recycling per year. Numerous residents also compost and use their compost within their yard.

Water & Energy Conservation - A number of residents practice water use reduction by collecting rainwater in barrels.

BALDUR SCHOOL

Baldur School, a vibrant hub on the east side of town (find us cruising down Elizabeth Avenue alongside highway 23!), takes immense pride in keeping our community spick and span. We believe a beautiful town fosters a beautiful spirit! Every spring, after the snow surrenders, Baldur School explodes into action. Earth Day is our annual clean-up day, where students and staff transform into a green-garbed cleaning and recycling crew. Armed with maps and mighty determination, each class tackles a designated area, leaving a trail of sparkling sidewalks and garbage-free zones in their wake! But our commitment to beautification doesn't stop there! We're proud recipients of a sustainable development grant, which fuels our floral fantasies. Garden beds bursting with colorful blooms (annuals and perennials) adorn the school grounds, while the old bell cairn from 1891 representing the Baldur District Schools in the Municipality of Argyle gets a springtime makeover with vibrant



containers and beds. Speaking of containers, we've just invested in some new ones, ready to burst with even more botanical brilliance! Looking west? You'll find our very own "edible education station" – raised garden beds teeming with vegetables! Fall finds us gathered around a steaming pot of soup, a delicious reward for our agricultural adventures. This year, get ready to "fry" into fall with a potato planting extravaganza! Our leafy ambitions don't stop at vegetables! We're setting our sights on planting new trees for a greener tomorrow. Plus, new types of perennials guarantee a vibrant floral display year after year.

And don't forget our butterfly haven at the front of the school that is a recent addition! This dedicated space flutters with life, attracting these beautiful pollinators with colorful blooms and carefully chosen plants. It's a feast for the eyes and a vital part of our ecosystem! The secret ingredient to our blooming success? Our incredible students! They're not just spectators in this beautification bonanza. Every year, they lend a helping hand to our dedicated flower committee. You'll see them out there, wielding shovels with a smile, digging holes and planting flowers with enthusiasm. It's a true team effort that keeps Baldur blossoming! Speaking of blossoming, relax and enjoy the view on one of our new benches or picnic tables that are scattered around the grounds. They're the perfect spot to soak up the beauty of our floral creation and maybe even enjoy a good book from our soon to be purchased,



“Free Little Library” under the shade of a planted tree, located at Veteran Park. So, the next time you're cruising down Elizabeth Avenue, keep an eye out for Baldur School – a testament to the power of community, environmental stewardship, and a whole lot of planting power.



Heritage Conservation

What Baldur Has to Offer

| Baldur and Area Businesses, Facilities, Services, Sports & Rec, Events & Entertainment and So Much More | | | |
|---|--|--|--|
| Hospitality / Grocery / Liquor | | Agriculture / Automotive / Construction / General | |
| Baldur Trading | | Cul Derrick Breeders and Kennel | |
| Baldur Bar & Grill | | Wet Walt's - Baldur Car Wash | |
| | | Everett Bros. Construction | |
| Professional Services | | Big Ears Donkey Ranch | |
| Treble Gie Law | | Gordon Jones Simmentals | |
| Baldur - Glenboro Gazette | | Rolly Grenier Construction (distance?) | |
| Sunrise Credit Union | | Pembina Coop (Ag / cardlock) | |
| Meighen Haddad LLP | | S & M Safety and Repair | |
| Guild Insurance | | Cross Creek Apiaries | |
| DEM - Desrochers Event & Project Management | | Central Assiniboine Watershed District | |
| Static Intervention (Virtual Counselling & Mental Health Education) | | Trileaf Colony Greenhouse | |
| | | Rock Lake Apiaries | |
| Health and Beauty | | Double J Contracting | |
| Joslyn's Hair Studio | | | |
| Worry Knot Massage Therapy | | Sports and Recreation | |
| Modern Hippie Designs Hair & cosmetic tattoo | | Recreation Centre | |
| Tina Dalzell Hair Design and Barbering | | Hockey / Curling / Skating / Summer Socials and Events | |
| | | Argyle Centennial Park - concessions & playground | |
| Facilities | | 1st Class Baseball and Softball diamonds | |
| Argyle Drop in Centre | | Renovated / upgraded campground | |
| RM of Argyle Municipal Shop | | Veteran Park - Picnic Shelter & Public Washrooms | |
| Waste Disposal Facility | | Belgian Bowling Alleys | |
| Argyle Museum | | Scenic Walking Trails | |
| Canada Post | | Fitness Centre | |
| Baldur Variety - office space | | Seasonal ski doo / quad trails | |
| Baldur Memorial Hall | | Fully Accessible Playground | |
| | | Services | |
| Education / Child Care | | RM of Argyle Handivan | |
| Baldur School (K-12) | | Senior Independent Services | |
| Baldur Early Learning Centre (Daycare & Nursery) | | Recreation District | |
| Argyle Public Library | | Weekly garbage / recycling pickup | |
| | | Baldur Area Fire Department | |
| Healthcare | | Tydipet mobile pet grooming | |
| Doctor - Two days a week | | | |
| Prairie Mountain Health | | Housing (age specific) | |
| Meals on Wheels | | 55+ housing (Collins Place) - 3 units | |
| Home Care | | Baldur Lodge | |
| Public Health Nurse | | | |
| Medical Clinic & Telehealth | | Churches | |
| Health Care Transitional Unit | | Baldur United | |
| Personal Care Home | | Catholic | |
| Baldur Pharmacy | | Grund Frelis | |
| | | Anglican | |
| Events and Entertainment | | Close Proximity | |
| Summer Solstice Days in June | | Rock Lake - camping and fishing | |
| Men's Curling Bonspiel (February) | | Pelican Lake - camping and fishing | |
| Ladies Curling Bonspiel (March) | | Golfing - Pleasant Valley, Glenboro, Pilot Mound | |
| Farmers Market - Fridays during summer | | Sand Hills Casino | |
| Mothers Day Brunch | | Spruce Woods Provincial Park | |
| Mall in the Hall (November) | | Brandon - 1 hour | |
| Home Routes Concerts | | Wpg - 2 hours | |
| Senior Christmas Dinner | | US border - 30 minutes | |
| Senior Baseball Games - Home of the Baldur Regals | | Grund Church | |
| Ladies Night (Fall) | | | |

The L.U.D. of Baldur is so proud to have a number of volunteer run community groups. These groups successfully operate due to the strong volunteer base our residents provide. Below you will find a glimpse of some of these groups and what they have been up to in the last couple of years, and how their existence contributes to the cultural richness of life in Baldur and particularly the seniors in our community.

Argyle Museum Profile

Argyle Museum is located in the historic storefront Poole Building (circa 1910) on Main Street in Baldur. The origins of the museum began when a dedicated group of ladies acquired the artifacts from Dr G E Hanks's medical display and Arni Bjornson's memorabilia from his cobbler/harness making business. With the community purchase of the Poole Building in 2007 an area was designated for the display based on a monthly rental.

The Museum currently houses the original two displays as well as a Baldur Legion display, Icelandic display, Churches and Schools of Argyle, Lot Legacy Project and numerous artifacts and memorabilia from sports teams, organizations, businesses and residences of Argyle.

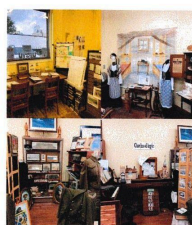
The Museum committee also holds the role of Municipal Heritage Advisory Committee for the RM of Argyle and over the years have completed several heritage projects with consultant Ken Storie and the Manitoba Heritage Council. These include a digitized inventory of heritage sites, notable people and places and the Icelandic establishment and origin in Argyle. These projects are available to be viewed at the Museum.

We rely heavily on volunteers to maintain the displays, have regular hours of operation and bookings by appointment and fundraise to cover the rental costs and upkeep.

Come Into Our Heritage

ARGYLE MUSEUM
*Located in Baldur in the Historic
 Poole Building (circa 1910)*

Home to:

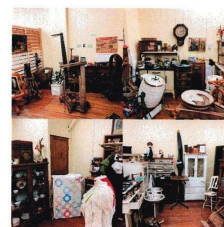


- Lot Legacy Project
- Icelandic Display
- Baldur Legion Display
- Churches & Schools of Argyle

- Business/Sports Display including Arni's Cobbler Trade
- Domestic Display
- Historic Clothing
- Medical Display of Dr G.E. Hanks

Historical Projects on Display:

- We Made Baldur
- Notable People-Argyle's Major Historic Figures
- Images of Baldur Booklet 1901-1906
- Special Places in RM of Argyle- Inventory of Heritage Sites
- The Argyle Icelandic Community-Origins, Establishment & Impact



PRESERVING OUR HERITAGE PROJECT

Bob and Shirley Conibear and Sandra Collins - Displayed at the Argyle Heritage Museum

During our coffee get-togethers, the three of us would often discuss past residents of Baldur and where they lived. We decided it was important to record the history of who lived in Baldur and where they lived. This started what we call The Lot Legacy Project.

During the first winter, we got a map of the town of Baldur and enlarged it so we could number each lot on the map. We started by listing the current residents in each lot and worked backwards to the original owners or occupants of that lot. This involved much research of history books, family history and conversations with many present and past residents. During the course of the winter we completed the project. However we have and still are updating any names or locations that have been given to us by visitors reviewing our project.

Having started this, we felt it was equally important to do the same with the businesses. The next winter, we categorized the businesses into past, current, and home-based. Again a review of history books, family histories, conversations and older photos gave us the information to put together a history of the business community in Baldur. The second map, a replica of the first, showed only the business locations.

After much discussion, we decided in the third winter we would make a photo book to conclude the Lot Legacy Project. This book has a picture of every house and business in Baldur as of the end of 2023. We then gathered pictures of houses and business locations that had been changed or torn down. The book has a picture of a house on the lot in 2023 and if available, the house that was there prior to the current one. The book also shows pictures of businesses and recreational facilities as they changed over the years. It includes street views both present and past.

VOLUNTEER ENRICHMENT GROUP

The Volunteer Enrichment Group is a committee that was formed to help with the residents in the Baldur Personal Care Home and Transitional Unit. When asked how old the committee is, no one could quite say, but it does go back decades. Some of the goals of the committee are to raise money to help make the care home feel more like a home for the residents. This has been done in the past by building raised gardens, purchasing patio tables and benches, the flowers for the patio, the Halloween treats for the trick or treaters, puzzles, shuffleboard, Mother's Day flowers and special treats for Father's Day, subscriptions to the local paper and more recently murals for the doors to each of the rooms. We also assist the Activities Director with some entertainment as well helping pay for outings and supplies. More recently we organized Christmas totes, where we asked for donations from the community and we were then able to purchase personalized Christmas totes filled with gifts for each resident that were delivered by Santa himself at the family Christmas party we hosted for the residents and their family. We also purchase the supplies for a Christmas stocking that is given to each resident to open Christmas morning. Although the funds play a huge part in what we can do, it's not all we do. We also volunteer our time when needed or asked on outings and during parties such as the Christmas party or the Mother's Day tea. We also help take the residents for walks around town and spend some one on one time with residents who aren't fortunate to have family close by to visit them often. The way we raise funds to help with these endeavors is to fundraise by having 50/50 draws, donation campaigns and looking into grants. To quote a former volunteer, Mrs Verna Lodge, "These things may not seem like much to the rest of us, but for the people that now make the Personal Care Home their new home, they are very important events. If these things can make their days brighter, we have reached our goal as 'Volunteers'!"

FUNERAL LUNCH COMMITTEE

In every community there are so many different committees and all these committees work together to help make our communities feel like home. Our little community is no different and our Funeral Lunch Committee is one that is there for our residents in some difficult times. In the past, there used to be many funeral lunch committees and they were based out of our many churches. Over the years, as many congregations decreased in size, things have changed and now there is only one group that serves the entire community. Though the Funeral Lunch Committee isn't one that is front and center or one that does a lot of fundraising, we are there for our community when they need us. We help those in time of sorrow and allow a space for family and friends to gather in difficult times. When there is a funeral in town, the committee stirs into action, food is ordered and volunteers are contacted to either make and serve food or simply make dainties. The volunteer list consists of community members as young as 22 to as "young" as 72. It is something to see and is something to be proud of when a community comes together for each other. Not every community is fortunate to have such a thing. It's these small committees that truly help to make Baldur a strong community.

BALDUR HALL

Baldur Hall Committee is a dynamic group of volunteers that have made it their mission to improve the overall aesthetic & functionality of the hall. To that means we have done many upgrades over the past few years. These improvements include:

- New Signage on the front of the Hall
- New Stage Curtains
- New Stage Flooring
- Newly Renovated Kitchen including new cupboards & countertops, new flooring, new sinks & an island
- Fresh Paint on entirety of the interior walls
- Changed out the existing lighting to more energy efficient lighting
- Sanded & revarnished the dance floor
- New flooring in the addition that currently houses the Nursery School
- Upgraded table & chairs
- Purchased a "new to us" cooler for the kitchen
- New main entrance doors
- Upgraded sound system & speakers
- Purchased Grand Piano



The facility ensures inclusivity by providing a wheelchair ramp for easy access and bathrooms designed with excellent accessibility features such as wider doors to accommodate individuals with diverse mobility needs.

Our facility also offers housing for the current nursery school program providing a safe and stimulating environment for young learners. This collaboration not only benefits the children but also strengthens community ties by utilizing resources effectively in promoting education within a welcoming public space.

In addition to the Nursery School being run out of the hall, as an inclusive gesture, Baldur Hall offers their currently unused space in the basement as a storage facility for some of the other committees which don't have the space to house their much-needed items.

By purchasing a grand piano and upgrading the sound system, the hall provides a platform for musicians and artists to showcase their talents - it's a great way to support the arts!

The hall is an integral part of our thriving community hosting many varied events which create lasting memories for residents of all ages. It serves as a hub for connection & growth which reflects the spirit within our vibrant community.

BALDUR FITNESS CENTER

Offers members 24 hour access by a key fob system. Includes a wide range of exercise equipment, showers and change rooms. Completely volunteer run, the gym usually has 20-30 active members. Thanks to Baldur and Area Endowment grants it was recently painted inside and has a new air conditioning system. In 2022 the Building Sustainable Communities grant enabled us to install a new entrance door, and purchase new equipment including dumbbells, leg press machine, multi station matrix and a smith machine.

BALDUR SENIOR HOUSING - COLLINS PLACE

Due to a recognized need for senior housing in our community, a committee was established and the complex was built in 2011. The committee has changed but the goal to provide a comfortable and affordable place to live remains the same.

In the past few years, there have been several upgrades. A small patio deck was added to the west side of each suite so residents have a seating area on the east and west side. The east side patio on each suite has been replaced with marble textured concrete to add safety and enhance the appearance. Ornamental fruit trees have been planted on the east and west lawns.

Upkeep of the building has included new siding, new shingles and new eavestroughing with gutter guards and new positioning of the downspouts to direct water away from the steps.

ARGYLE LODGE

Affordable living is a tremendous asset to any community but especially in rural areas. As residents age and want to downsize their homes they turn to the Argyle Lodge for housing. What is important to the area is to be able to keep residents in the community, where they have ties to family and other community members.

The Argyle Lodge is located in the town of Baldur, MB. The 9-room complex was built in the early 70's. It has been a vital part of our community for our senior residents. Our board of directors are made up of volunteers from the community. They look after questions, maintenance, finances for the building as well as the grounds.

We try to make each suite homey and comfortable both indoors and outdoors. All suites have been renovated and updated through the years. whether new flooring, paint, cupboards, our board wants to make the suites updated and give a real home feeling. Outside the building we encourage beautification at each renter's window. Many have put in flowers, lights and other esthetically pleasing features to add to the feel of home and community.

We were extremely fortunate that a community member donated to build a carport in recent years. Now the renters are able to store their vehicles in the car port, sheltering from the sun and snow. This year we will be planting trees and shrubs in front of the carport so renters whose windows lookout towards the carport will have greenery to add to the view.

The Argyle Lodge supports the Communities in Bloom initiatives and feel the organization brings great pride to the community and municipality.

BALDUR & AREA ENDOWMENT FUND

The Baldur and Area Endowment Fund (BAEF), as part of Endow Manitoba and the Killarney Foundation, contributes financial assistance to community-based projects. Since its inception in 1999, BAEF has contributed close to \$130,000 to community-based projects, approximately \$5200 every year.

Contributions are welcome all year however for approximately two weeks each fall Endow Manitoba holds a Giving Challenge when the Manitoba Government contributes \$2 for every \$5 donated to the fund. Donations during this period ensure maximum funds are injected back into the community. Grant applications and guidelines are available at the RM of Argyle office. We thank you for your contributions.

Recent projects include:

- Memorial Hall cooler and front door
- Flower Committee shed and tools
- School sandbox
- Care home mural and games
- Fitness Center paint, air conditioning
- Playground equipment for the Baldur Early Learning Centre
- Sports equipment for the updated baseball fields

Tree Management

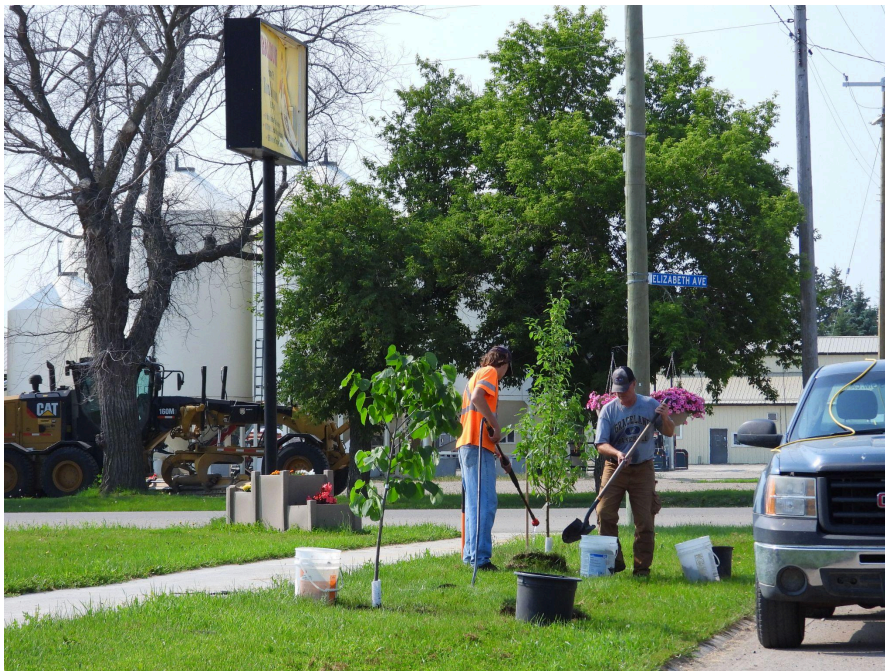
In 2018 Baldur was the unfortunate recipient of a major hail storm. The majority of our tree infrastructure was damaged to some extent. Unfortunately some trees have not fully recovered with our town now having many trees that are healthy and strong on their southeast side and rather sparse and unbalanced on the northwest side. Some residents sought out the advice of an arborist and had their trees either pruned or taken down after this major June storm. At this point in time the only routine pruning of trees on public or private land is conducted by Manitoba Hydro to remove branches that are interfering with power lines.

In an effort to keep the canopy growing the L.U.D. has committed to acquiring 10 trees per year. This number is based on the ability to maintain and manage the new plantings. Forty-seven trees have been planted since 2020. The trees range in varieties including silver maple, flowering crab - gladiator, flowering crab - spring snow, russian mountain ash, hackberry, alder, birch and oak.

Baldur was fortunate to receive a Pembina Co-op grant of \$1500, which included supplies and volunteers to help plant and a Pembina Valley Watershed District grant which included eight free trees and mulch for placing around the base.

Deer have proven to be a problem to the success of new young trees in some areas. Fences have been placed to try and reduce the damage.

The CiB committee has decided to develop a tree management program over the winter of 2024/2025. It has become evident that selecting and planting suitable trees is only a small part of maintaining an urban forest.



Landscape

Baldur campground has undergone extensive renovations which include new gravel parking pads, 30 amp power, water and sewer hookups in all sites. Situated along the baseball diamonds and across from the Baldur Recreation Center the campground is easily accessible for all patrons. In 2023 the campground was fully booked by the highway construction crew. It was wonderful to see the full lots.



East of site one and two you will find the accessible playground that was built in 2020 by fundraising efforts from the Baldur Community Development Association, Recreation Director and community. The old unsafe playground had been removed and residents knew it was a good idea to place a new playground in the park.

Baldur East Sign Xeriscape Bed

What is xeriscaping? Basically it is gardening in a way that requires little or no irrigation. It can be referred to as water-conserving or drought-tolerant gardening or landscaping. 2020 was the last year of the two tiered railway tie bed on the east side of Baldur which had been built around the turn of the century. Due primarily to safety concerns related to railway ties shifting and rotting, it was decided to remove all ties and remake the bed. The primary goal was to create a bed that required less water, especially as we were using potable water from the water tank. Xeriscaping and native plants and grasses were researched to learn about drought tolerant gardening.

Year One -2021

With the help of the grade nine students the railway ties were dismantled and removed. Many, many weeds were dug out and taken to the dump. The plan was to use rocks to define different levels and show-off the plants against the new graduated incline. The bed was expanded to also include a flat area of newly broken sod and it was decided not to use hardscape edging around the bed. Along with a generous donation of dramatic rocks, a mixture of many donated native and other hardy perennials were received. About eighty plants with half being grasses were planted in August. Traveling deer, resident moles and snakes were part of the package at the east end of Baldur. A mulched walkway in the bed allowed easy access to the plants. Plants were sparingly watered using 4 liter jugs to help establish their root systems.

Year Two -2022

After the winter the plants were assessed. The grasses generally did well, but many of the flowering plants had disappeared completely. One Coneflower, two Alumroots and several low green Sedums and Goldenrods survived. It is likely that deer enjoyed some tasty snacks before snow covered the garden. Weeding took up a lot of time. The soil in the new flat area was full of clay so gypsum granules and compost were purchased for that area. After more research it became evident that the best way to amend clay soil is with lots of compost and then lots more again. In August the garden was watered more regularly as there was almost no rain. The surrounding mixed grass prairie with its aggressive weeds was slowly making its way into the bed edges.

Year Three 2023

After some research into drought-hardy and deer-resistant plants we purchased 70 plugs of native plants from a southern Manitoba nursery that propagates their plants from locally collected native seed. Also the steep incline of the bed led to water run off so more flat levels were developed using rocks donated from several sources. Earth, manure, compost, sand and pea gravel were purchased to amend various sections of the garden bed. A scree area was created as some of the new plants were noted to grow well in sand and gravel areas. Seven cubic yards of tree mulch was donated by a local tree service. The whole bed was surrounded with a deep(6 inch) and wide (5-6 feet)layer. Finally the bed was ready to plant the plugs. They were so tiny that it was hard to imagine they could survive a Zone 3 winter.

Year Four -2024

The first look at the bed was in May. Of the 70 plugs, 62 had survived and were growing nicely. The few weeds were easily pulled out. A couple of weeks later the whole bed was over-run with sprouting seeds and weeds. Four 5 gallon buckets of weeds later the main culprit was identified: Goldenrod. After a bit of reading it was clear this plant should be removed from the bed, as the type of Goldenrod was unknown and some types are invasive and it is suggested that Goldenrods not be used in garden beds. So they are about to be turfed. The clay area needs more compost so it will continue to be amended and no cute little plugs will be planted in that area for now. The new Wild Bergamot, Three Flowered Avens, Alumroot, Pink Onion and Blue Eyed Grass are growing nicely and are being monitored to see how they adapt to this site. The bed edges and the walkway within the bed will continue to be mulched as the xeriscape bed is surrounded by wild prairie. Baldur has received more than the usual amount of rain this spring and early summer, so no potable water has been used at this time.

After the first four years, these lessons have been learned. The early years of transitioning to xeriscaping is no easier than any other type of gardening. Selecting plants for environmental conditions is key. So know your plants: Scientific name, propagation systems, bloom times, size. Composting is the best way to amend the soil. There is never too much mulch. There are some tough non-native plants that work well in a xeriscape garden. There are numerous beautiful native clump grasses: Big Bluestem and Little Bluestem, Panic Grass, Prairie Dropseed, and Blue Grama.

BALDUR MINOR BALL COMMITTEE

The north ball diamond has undergone extensive renovations after a group of residents came together to create a great new place for children and adults to play baseball/softball. After a successful fundraising drive and the help of the province of Manitoba Building Sustainable Communities Grant we were able to complete the following using our \$80,000 budget:

- New chain link fence, backstop and dugouts. The entire diamond was shifted north to allow foot access to the adjoining campground and public washrooms. Roofs to be installed on both dugouts.
- Concrete base in dugouts
- Weeping tile in the outfield to assist with drainage
- Red clay baselines
- Benches are being ordered
- Mower/tractor to be purchased
- New batting cage netting, turf and pitching machine



Plant and Floral Displays

Baldur Flower Committee

Our Flower Committee has been busy since Covid. With the help of the Baldur and Area Endowment Fund and the Building Sustainable Communities Grant we were able to purchase a garden shed the municipality allowed us to place in Veteran's Park. It has been outfitted with shelves, hand tools, shovels, rakes, a battery powered weed wacker and hedge trimmer. A welcome addition to move our supplies, planters etc. out of our volunteers yards and into a central location where all of the committee's volunteers can access them and not have to bring their personal items.

We have made it a priority the last couple of years to incorporate the "Colour of the Year" into our planning process. By gazette articles and Facebook posts we share the color and encourage the residents of the municipality to join in the fun. The flowers we display are purchased from the greenhouses in the local area.

Baldur Solstice Days has allowed us to take part and host a Free Perennial program, the committee members all donate to this, we have heard nothing but compliments and it is so rewarding to see how excited individuals are to come and choose plants to add to their yards! This year we added a plant swap and welcome donations from the community members.

You will see the raised beds on the south side of highway 23. Our perennial flower bed is being transitioned into a "Food Forest" that we hope all residents will use and enjoy. To date we have planted raspberries, strawberries, asparagus, lovage, egyptian walking onions, chives, rhubarb, horseradish, and a cherry tree. Grapes or hops will be added next to create the vine layer.

Another new addition is the creation of a "Xeriscape" bed at the east Baldur Sign. See the LANDSCAPE section for more information.

The past few years have also had their challenges, with many of our hard working volunteers retiring we are in need of new workers. Our small group has come together and due to the excellent records that have been kept we are striving to continue the same planning and work that has come in all the years before. We are so fortunate to rely on the Baldur School high school students who help prepare the beds and planters for flowers. Also, the Sunrise Credit Union staff who help to plant all of our flowers in the spring and clean them out in the fall. The municipality summer students have been watering for us during the times that we were unable to hire anyone to fulfill the watering contract. We couldn't do what we do without all of your help.

Over the past 20 years the Flower Committee has used many different sizes and styles of hanging pots and large planters. In 2024 the majority of our pots and planters are self-watering and considerably larger in size than when we began making Baldur beautiful at the end of the 20th century.





Currently we look after 17 hanging pots, 10 large planters, 19 square planters, and several one-of-a-kind planters like the seeder and the plow. There are six inground beds and one food forest. The high school students and the employees of the Sunrise Credit Unions volunteer annually to do the spring soil preparations, the planting and the fall clean-up.

The LUD of Baldur provides significant financial support for the purchase of flowers and supplies, plus the resources to pay an individual to water for the season.

There are many residents that participate in dead-heading and clean-up as they go about their activities in town.

The displays focus on our main drag which is called Elizabeth Avenue and is also highway 23. The Argyle Centennial Park (baseball diamonds & campground), the West and East entrances into Baldur, and several of the main buildings also have planters to add color throughout our town.

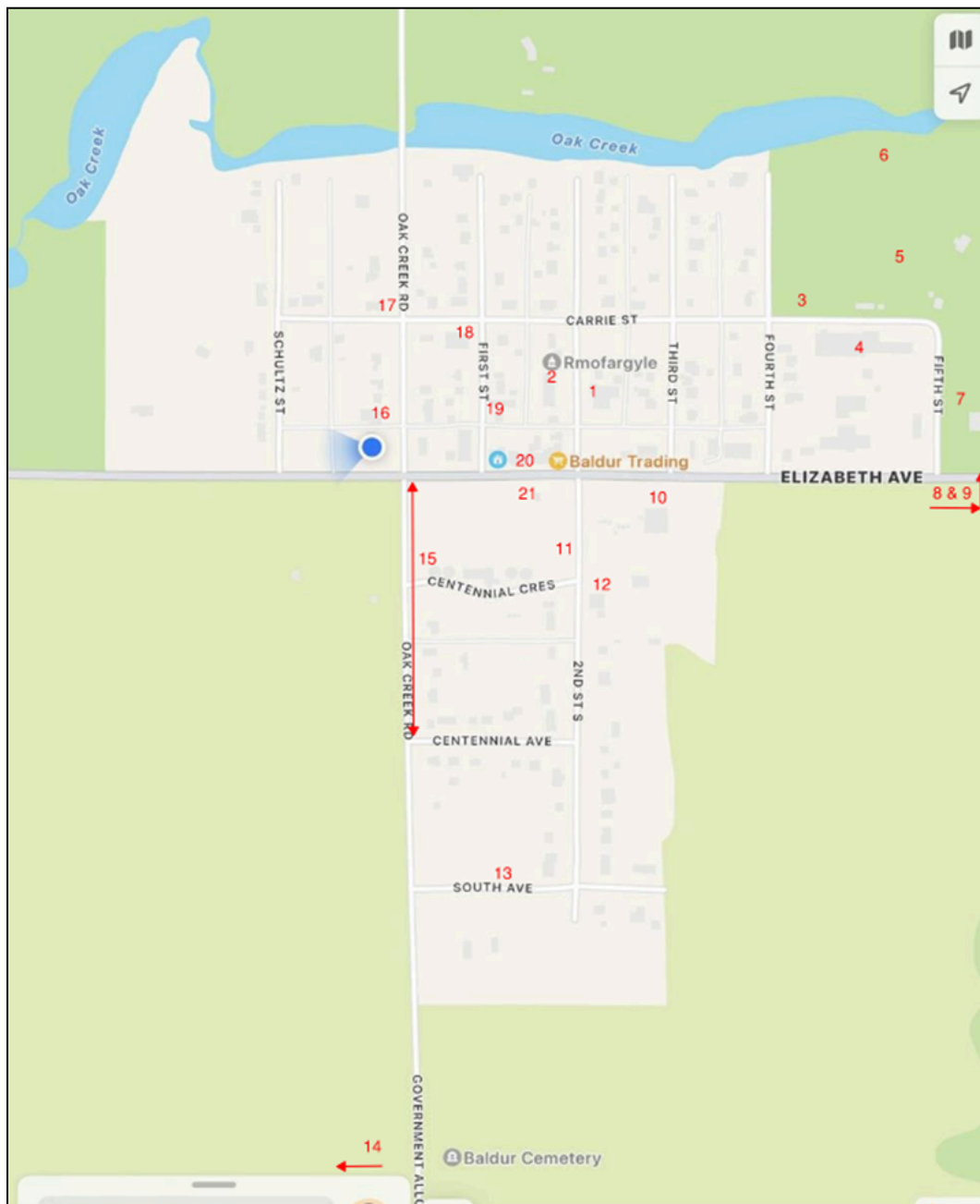
This summer we were the recipients of the Scotts Miracle Gro Best Garden reward, we did a committee and community vote for residents favorite gardens and will showcase these yards in our tour. Upon inspection it was noted how many nice gardens/yards there are in town, it was great to see. Congratulations to all the gardeners, job well done.

Public Participation in Activities - Baldur School students are a huge part of the flower planting process, they help get the beds and planters prepped in the spring. Sunrise Credit Union staff are also very involved in the planting and clean up in the fall.



Map

- | | | |
|---------------------------------------|---|----------------------------------|
| 1. Baldur Bar and Grill | 8. Honey House | 15. Oak Creek Road path / paving |
| 2. Municipal Office | 9. East Baldur Sign – Xeriscaping Project | 16. Firehall / town shop |
| 3. Ball Diamonds | 10. Food Forest Project | 17. Beauchamp church |
| 4. Recreation Centre | 11. Baldur Early Learning Centre | 18. Memorial Hall |
| 5. Campground / Accessible playground | 12. Pembina Co-op | 19. Argyle Drop in Centre |
| 6. Walking Trail | 13. South Ave – infrastructure & trees | 20. Argyle Museum |
| 7. Baldur School | 14. Waste Disposal Grounds | 21. Veteran Park |



Itinerary

| Date: July 25th | Location/Activity | Duration |
|----------------------------------|---|-----------------|
| Time: | | |
| 8.00 a.m. | Breakfast at hotel with committee chairs - Baldur Hotel | 1 hour |
| | | |
| 9:00 a.m. | Meet at the RM of Argyle Office with Municipal Officials | 30 minutes |
| | | |
| 9:30 a.m. | Begin Tour | |
| | Baldur Minor Ball Park/Campground/Playground Tour | |
| | Honey House Tour - Doug Elliot | |
| | East Baldur Sign - Xeriscaping Project | |
| | Baldur School - Grounds & Butterfly Garden | |
| | Food Forest Project | |
| | Pembina Coop Tour - Jeff Parsonage | |
| | | |
| | Lunch Break - Baldur Hotel | 1 hour |
| | | |
| | Baldur Early Learning Centre - Daycare | |
| | South Avenue paving/water & sewer line extensions | |
| | Waste Disposal Grounds Tour - Bill Fierens | |
| | Oak Creek Road path/paving projects | |
| | Fire Hall - new rainwater collection site | |
| | Beauchamp Church - Doug Beauchamp | |
| | Select Community Members Yards "Best Garden" Recipients | |
| | Veteran Park | |
| | Argyle Museum, Heritage Legacy Project - Brenda Gudnason | |
| | | |
| | <ul style="list-style-type: none"> • Possibility to add a water plant tour, depending on availability of operator. | |
| | | |
| 2:00-2:30 p.m. | Judges Deliberation at the municipal office | 2 - 2.5 hours |
| | | |
| 5:15 p.m. | Supper - Argyle Park food booth | 1.5 hours |
| | | |
| 6:15 p.m. | Judges Presentation | |
| | | |

Contacts

| Name/Address | Affiliation/title | Email | Phone |
|-------------------------|---|---------------------------|--------------|
| Doug Beauchamp | Owner of Church | | 204-522-5586 |
| | | | |
| Bob & Shirley Connibear | Heritage Legacy Project | | 204-825-8398 |
| | | | |
| Sandra Collins | Heritage Legacy Project | | 204-535-2301 |
| | | | |
| Darcy Dearsley | LUD/Water Plant Operator | dearsleydarcy@gmail.com | 204-825-7285 |
| Bill Fierens | Waste/Recycling Site | | 431-645-1483 |
| Doug Elliot | Owner -Honey Hut | | 204-523-0993 |
| | | | |
| Laurie Glenn-Martindale | School Principal | lgm@prspirit.org | 204-535-2314 |
| | | | |
| Brenda Gudnason | Museum | brendagudnason@gmail.com | 204-825-7755 |
| | | | |
| Hedy Joycey | Flower Committee/CiB | hljoycey@gmail.com | 204-795-2576 |
| | | | |
| Jeff Parsonage | Pembina Co-op | | 204-825-7885 |
| | | | |
| Randy Desrochers | Baldur Community Development Association/CiB Profile Book | rd-desrochers1@gmail.com | 204-441-0580 |
| | | | |
| Tara Reimer | Manager/Owner Baldur Bar & Grill (Hotel) | | 204-535-2049 |
| | | | |
| Tammy McIntosh | CiB Profile Book/President | work-Office@rmofargyle.ca | 204-245-0805 |
| | | | |
| | | | |